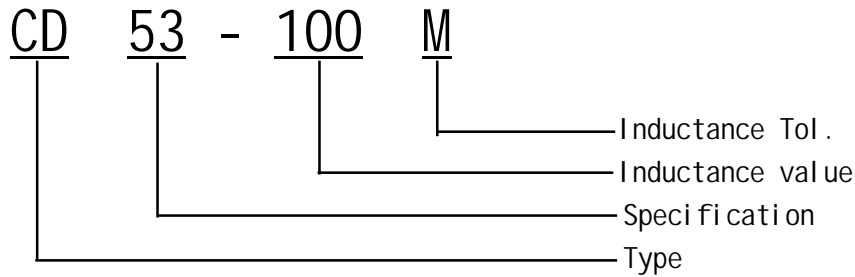


SMD Power Inductors CD53 Series

贴片功率电感CD53 系列



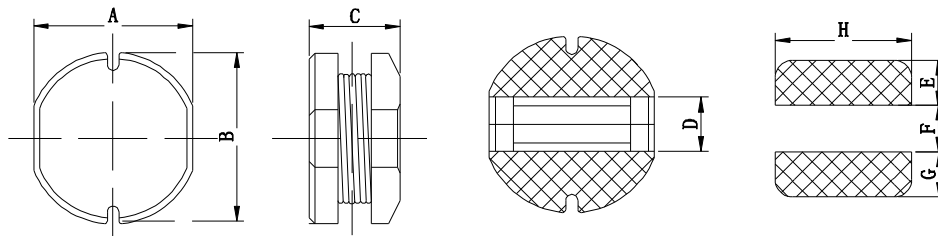
I. Ordering Code:



※ Inductance Tol. J: $\pm 5\%$, K: $\pm 10\%$, M: $\pm 20\%$, N: $\pm 30\%$.

※ Inductance value. 1R0: 1.0uH, 100: 10uH, 101: 100uH, 102: 1000uH.

II. Configuration & Dimensions: (mm)



Size	A	B	C(max)	D	E	F	G	H
CD53	5.20 \pm 0.30	5.80 \pm 0.30	3.80	1.80	2.70	1.20	2.70	5.80

III. Materials :

- Core: Ferrite DR core
- Wire: Enamelled copper wire
- Terminal: Cu/Sn
- Encapsulate: Epoxy novolac molding compound
- Remark: Products comply with RoHS' requirements

IV. General Specification :

- Storage temp. : -40 $^{\circ}$ C----+125 $^{\circ}$ C
- Operating : -40 $^{\circ}$ C----+105 $^{\circ}$ C
- Temp. rise : 40 $^{\circ}$ C Max. at rated current.



Specifications subject to change without notice. Please check our website for latest information. Released: 2012/12/18

Danxingda Shenzhen, China Tel: 0755-61303918 Fax: 0755-83462232 Web: <http://www.mydxd.com> E-mail: lareina@mydxd.com



CD53 Series

Part No.	L (uH)	Test Freq .(KHZ)	Tolerance	D.C.R(Ω)	Rated Current
				MAX	(A)
CD53-1R0N	1.00	100K/0.25V	$\pm 30\%$	16.5m	3.70
CD53-1R5M	1.50	100K/0.25V	$\pm 30\%$	19.5m	3.50
CD53-1R8M	1.80	100K/0.25V	$\pm 30\%$	22.0m	3.00
CD53-2R2M	2.20	100K/0.25V	$\pm 30\%$	25.0m	2.85
CD53-2R7M	2.70	100K/0.25V	$\pm 30\%$	28.0m	2.50
CD53-3R3M	3.30	100K/0.25V	$\pm 30\%$	39.5m	2.40
CD53-3R9M	3.90	100K/0.25V	$\pm 30\%$	46.0m	2.25
CD53-4R7M	4.7	100K/0.25V	$\pm 20\%$	52.0m	1.90
CD53-5R6M	5.6	100K/0.25V	$\pm 20\%$	58.0m	1.88
CD53-6R8M	6.8	100K/0.25V	$\pm 20\%$	71.2m	1.87
CD53-8R2M	8.2	100K/0.25V	$\pm 20\%$	80.6m	1.82
CD53-100M	10.0	1.0K/0.25V	$\pm 20\%$	93.6m	1.78
CD53-120M	12.0	1.0K/0.25V	$\pm 20\%$	0.126	1.60
CD53-150M	15.0	1.0K/0.25V	$\pm 20\%$	0.139	1.58
CD53-180M	18.0	1.0K/0.25V	$\pm 20\%$	0.160	1.30
CD53-220M	22.0	1.0K/0.25V	$\pm 20\%$	0.192	1.29
CD53-270M	27.0	1.0K/0.25V	$\pm 20\%$	0.242	1.10
CD53-330M	33.0	1.0K/0.25V	$\pm 20\%$	0.325	0.950
CD53-390M	39.0	1.0K/0.25V	$\pm 20\%$	0.369	0.920
CD53-470M	47.0	1.0K/0.25V	$\pm 20\%$	0.436	0.820
CD53-560M	56.0	1.0K/0.25V	$\pm 20\%$	0.553	0.800
CD53-680M	68.0	1.0K/0.25V	$\pm 20\%$	0.628	0.760
CD53-820M	82.0	1.0K/0.25V	$\pm 20\%$	0.785	0.670
CD53-101M	100.0	1.0K/0.25V	$\pm 20\%$	0.848	0.615
CD53-121M	120.0	1.0K/0.25V	$\pm 20\%$	1.03	0.600
CD53-151M	150.0	1.0K/0.25V	$\pm 20\%$	1.44	0.480
CD53-181M	180.0	1.0K/0.25V	$\pm 20\%$	1.64	0.430
CD53-221K	220.0	1.0K/0.25V	$\pm 10\%$	2.08	0.370
CD53-271K	270.0	1.0K/0.25V	$\pm 10\%$	2.46	0.330
CD53-331K	330.0	1.0K/0.25V	$\pm 10\%$	3.71	0.300
CD53-391K	390.0	1.0K/0.25V	$\pm 10\%$	4.24	0.255
CD53-471K	470.0	1.0K/0.25V	$\pm 10\%$	4.42	0.235
CD53-561K	560.0	1.0K/0.25V	$\pm 10\%$	4.68	0.220
CD53-681K	680.0	1.0K/0.25V	$\pm 10\%$	6.42	0.210

VI. 额定电流 Reted Current:

电感值下降至初始值的10%或温度上升至40℃时的直流电流值中的最小值。(环境温度20℃)

This indicates the value of current when the inductance is 10% lower than its initial value at D.C. superposition or D.C. current when T=40℃ whichever is lower. (Ta=20℃)

VII. 无铅制品 Lead-free

VIII. 测试仪器 Test instrument : HP4284A, 502BC, CH1062A.